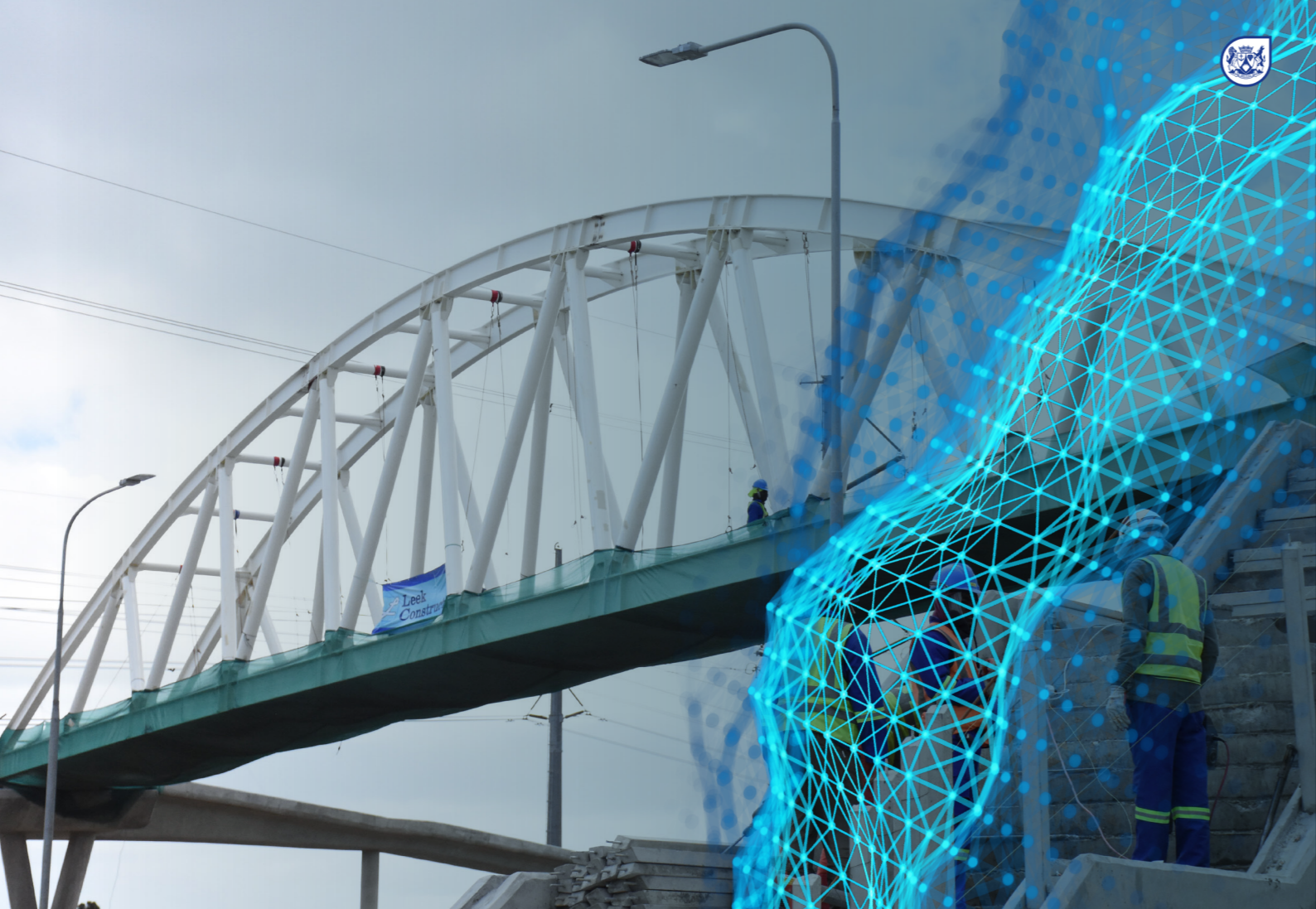




Western Cape
Government
FOR YOU

JOURNEY TO 2050

WITH THE WESTERN CAPE GOVERNMENT



The future we are building cannot be achieved in isolation. It demands bold collaboration, shared responsibility, and a clear vision that connects infrastructure to development, dignity, and economic mobility. That is why the Western Cape Government established the Department of Infrastructure, not just to build and maintain structures, but to become a catalyst for opportunity and a partner in socio-economic transformation.

The **Western Cape Infrastructure Framework 2050** is our long-term vision. It is a living document that guides us toward a province where infrastructure strengthens resilience, connects people to services, unlocks access to markets and jobs, and drives inclusive growth. Informed by science, policy and lived realities, it is a framework that positions infrastructure as an enabler, not an end.

Our vision is made actionable through the **Western Cape Infrastructure Strategy 2050**, which defines our sector priorities and targets, and the **Western Cape Infrastructure Implementation Plan 2050**, our operational roadmap. Together, they form an integrated approach to investment, delivery and impact.

This booklet summarises our collective effort to plan boldly, deliver decisively and shape a future where infrastructure leaves a lasting legacy, one that our children and grandchildren will inherit with pride.



**Minister
Tertuis Simmers**

Western Cape Provincial
Minister of Infrastructure



Western Cape Government
FOR YOU

Department of Infrastructure
Western Cape Infrastructure Framework 2050

Scan QR code to access WCIF 2050



WCIF 2050

OVERARCHING FRAMEWORK FOR A SUSTAINABLE, INCLUSIVE AND RESILIENT FUTURE.



At the heart of our infrastructure journey is the **Western Cape Infrastructure Framework 2050 (WCIF 2050)**, a bold, long-term vision that reimagines what infrastructure means and what it can do. It presents a future that is sustainable, inclusive and resilient, and positions infrastructure as a driver of **social equity, economic development** and **environmental restoration**.

VISION

To enable infrastructure-led growth and investment for the Western Cape that will benefit the communities we serve.

IMPACT STATEMENT

A flexible, innovative and inclusive framework for collaborative infrastructure planning and asset management that informs and aligns sound decision-making and serves the needs of citizens, communities, enterprises and the natural environment.

FOUNDATIONS OF THE FRAMEWORK

Guided by Panoptic Principles, the WCIF 2050 emphasises transversal governance, public value and innovation, ensuring that infrastructure decisions are future-proof, accountable, and people-centred. These principles are rooted in global, national and provincial strategies, and align with government's commitment to inclusive growth, ethical leadership and climate resilience.

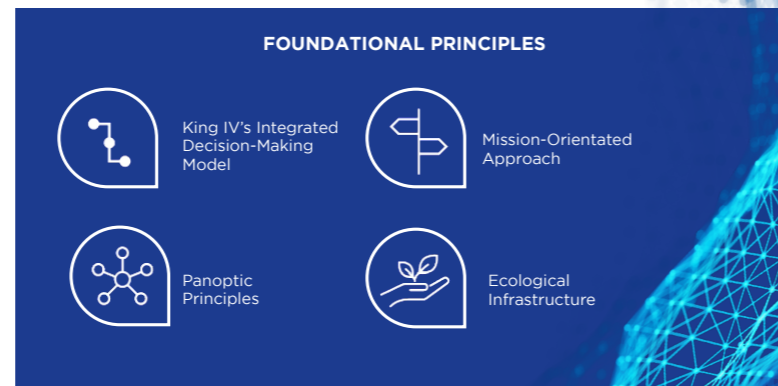
By embracing **panarchic governance**, the WCIF 2050 enables responsive, multi-level decision-making, where government, private partners and communities each play a role in shaping solutions. It's a model of shared ownership, transparency and collaboration.

Aligned with the Western Cape Spatial Development Framework 2035, it supports coordinated planning that addresses spatial inequality and historic injustice. It prioritises regenerative infrastructure that restores balance to our systems rather than simply reducing negative impacts.

THINKING IN SYSTEMS

Recognising the need for deep integration across systems and sectors, the WCIF 2050 is built on Complex Adaptive Systems thinking. This approach

views infrastructure as part of a dynamic, interdependent ecosystem and promotes continuous feedback, adaptability, and responsiveness to spatial, social and economic realities.



Informed by science, policy and lived realities, the **WCIF 2050** is a blueprint for strategic investment and transformative delivery, positioning infrastructure as an enabler, not an end.

PANOPTIC PRINCIPLES

1 Infrastructure innovation that drives equitable economic, social and environmental development.

2 Innovative infrastructure value chains/ecosystems contribute to building resilient, sustainable and regenerative systems.

3 Sustainable stakeholder value is created by infrastructure and services that build trust, leverage societal justice and the six capitals.

4 Infrastructure design, commission, delivery and management is best supported and enabled by transversal planning and governance.

The WCIF 2050 will shape and guide evidence-informed infrastructure strategies and implementation plans, by ensuring that these are consistent, efficient and effective.





Scan QR code to access WCIS 2050



Western Cape Government FOR YOU

Department of Infrastructure
Western Cape Infrastructure Strategy 2050



WCIS 2050

A MISSION-ORIENTED STRATEGIC BLUEPRINT FOR INFRASTRUCTURE-LED GROWTH.



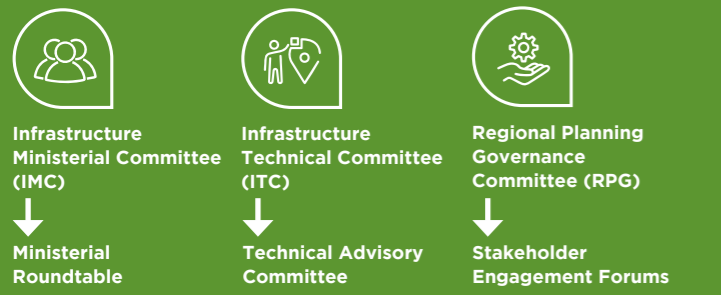
The **Western Cape Infrastructure Strategy 2050 (WCIS 2050)** maps out a clear path for infrastructure-led growth that is smart, inclusive and sustainable, directly supporting South Africa's vision for poverty reduction, equality and increased employment through strategically driven development that does not compromise environmental integrity. The WCIS 2050 ensures that infrastructure investments actively support spatial transformation across the Western Cape, addressing the historical legacies of spatial inequality. It connects people, places and opportunity, building a better Western Cape for generations to come.

A STRATEGY GROUNDED IN COLLABORATION

The WCIS 2050 was developed through extensive consultation with provincial departments, municipalities, private entities and communities. It recognises infrastructure as an interconnected ecosystem, requiring collaboration and shared responsibility across all levels of society. This inclusive approach ensures that diverse interests and priorities are reflected in infrastructure planning and implementation, creating an equitable foundation for development.

TRANSPARENT GOVERNANCE FOR DELIVERY

A comprehensive governance framework underpins the WCIS 2050, supporting **accountability, collaboration, innovation and delivery**:



These structures are supported by advisory panels and Communities of Practice, which foster transparency, knowledge sharing and operational efficiency, integrating perspectives from across the public and private sectors.

FOCUSED ON WHAT MATTERS MOST

Five focus areas that will serve the Western Cape's present and future, through to 2050.



WCIF 2050 Focus Areas

POLICY ALIGNMENT

The **WCIS 2050** is aligned to key global, national, provincial and local strategy and policy directives, reinforcing its legitimacy and strategic impact.

INTERNATIONAL AND REGIONAL

Sustainable Development Goals (SDGs); Agenda 2063, implemented by the New Partnership for Africa's Development (NEPAD)

NATIONAL

National Development Plan (NDP); National Infrastructure Plan 2050 (NIP 2050); Spatial Planning and Land Use Management Act (SPLUMA)

PROVINCIAL

Provincial Strategic Plan (PSP) 2025-2030; Growth for Jobs (G4J) Strategy; Ecological Infrastructure Investment Framework (EIIF); Western Cape Spatial Development Framework 2035 (SDF); Climate Change Response Strategy; Provincial Land Transport Framework (PLTF)

MUNICIPAL

Integrated Development Plans (IDPs); Municipal Spatial Development Frameworks (MSDFs); Municipal Finance Management Act (MFMA); Capital Expenditure Framework (CEF)

This ensures that the WCIS 2050 is locally relevant and globally responsible.

DESIGNED FOR A RESILIENT FUTURE

Sustainability is central to the WCIS 2050. Through **regenerative infrastructure, adaptive climate strategies** and **long-term asset maintenance**, it strengthens the province's resilience to extreme weather, resource scarcity and infrastructure ageing. A dedicated **risk-scanning tool**, along with **preventative and predictive maintenance**, positions infrastructure renewal not just as upkeep, but as a **lever for equity, innovation and transformation**.

FINANCING FOR IMPACT

To meet funding needs, the WCIS 2050 adopts **innovative financing models** such as **public-private partnerships** and **blended finance**. These approaches aim to attract investment, ensure equitable access to services, and maximise the social and economic returns of infrastructure projects.

MEASUREMENT THAT MATTERS

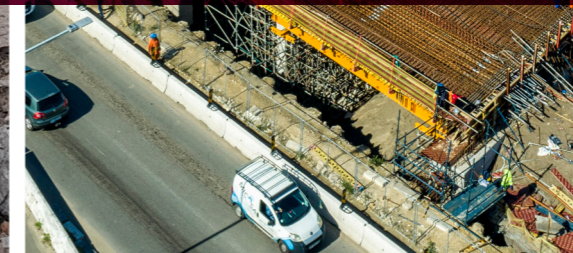
Real-time performance tracking is guided by the Logic Model Framework and the Theory of Change, supporting **adaptive management, evidence-based decision-making** and **proactive risk mitigation**.

Through integrated governance, inclusive planning, and bold investment, the **WCIS 2050** lays the foundation for a resilient, equitable and prosperous Western Cape.





Scan QR
code
to access
WCIIP 2050



WCIIP 2050

OPERATIONAL ROADMAP FOR A SINGLE
INFRASTRUCTURE PROJECT PIPELINE.



The **Western Cape Infrastructure Implementation Plan 2050 (WCIIP 2050)** is where the vision and strategy meet action. It translates our long-term goals into real projects that make a difference in people's lives, today and tomorrow. Focused across five vital sectors - **Social, Energy and Water, Economic, Technology, and Ecological** - the plan ensures that infrastructure supports equity, resilience and future readiness.

GUIDED BY PRINCIPLES, DRIVEN BY PURPOSE

Like the Framework and Strategy, the Implementation Plan is rooted in the **Panoptic Principles** and aligned with provincial, national and global policy commitments.

Its purpose is clear: to drive equitable access to basic services, promote spatial transformation and strengthen resilience through targeted, impactful projects.

RESPONDING TO OUR REALITIES

The WCIIP 2050 directly responds to the Western Cape's complex socio-economic realities: youth unemployment, service delivery gaps and climate vulnerability. Informed by local and global economic trends, the plan enables labour-intensive, quick-to-deploy projects that stabilise essential services while building long-term resilience.

STRATEGIC, PHASED AND IMPACTFUL

The Plan uses a **Sector Prioritisation Matrix** to guide investment where it matters most. It balances short-term urgency with medium- and long-term impact, setting out a clear, phased pathway to a sustainable and inclusive future.

A MODEL FOR CONTINUOUS IMPROVEMENT

A robust monitoring and evaluation framework tracks performance and ensures transparency, compliance and continuous improvement to ensure responsiveness to emerging infrastructure needs and challenges.

The **WCIIP 2050** aligns seamlessly with the WCIF 2050 and WCIS 2050, ensuring a coherent infrastructure system that operationalises the PSP's transversal priority: Spatial Transformation, Infrastructure and Mobility.



A FOUR-STEP APPROACH TO IMPACT



Scan the environment.



Priority list of projects based on alignment to the Western Cape Sector Priority Matrix.



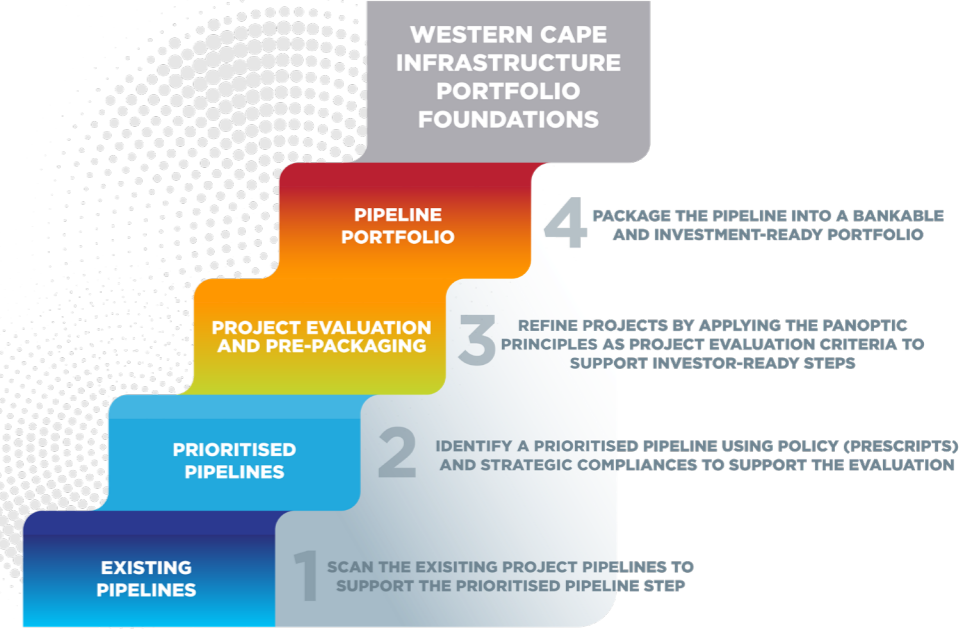
Evaluate projects against the Panoptic Principles.



Package projects into bankable and investment-ready portfolios.

This structured process supports efficient and coordinated implementation through blended finance and other innovative funding mechanisms.

WESTERN CAPE SINGLE INTEGRATED INFRASTRUCTURE PIPELINE



We have the framework. We have the strategy. We have the plan. We have the momentum to make it real. Most importantly, **we have you.**

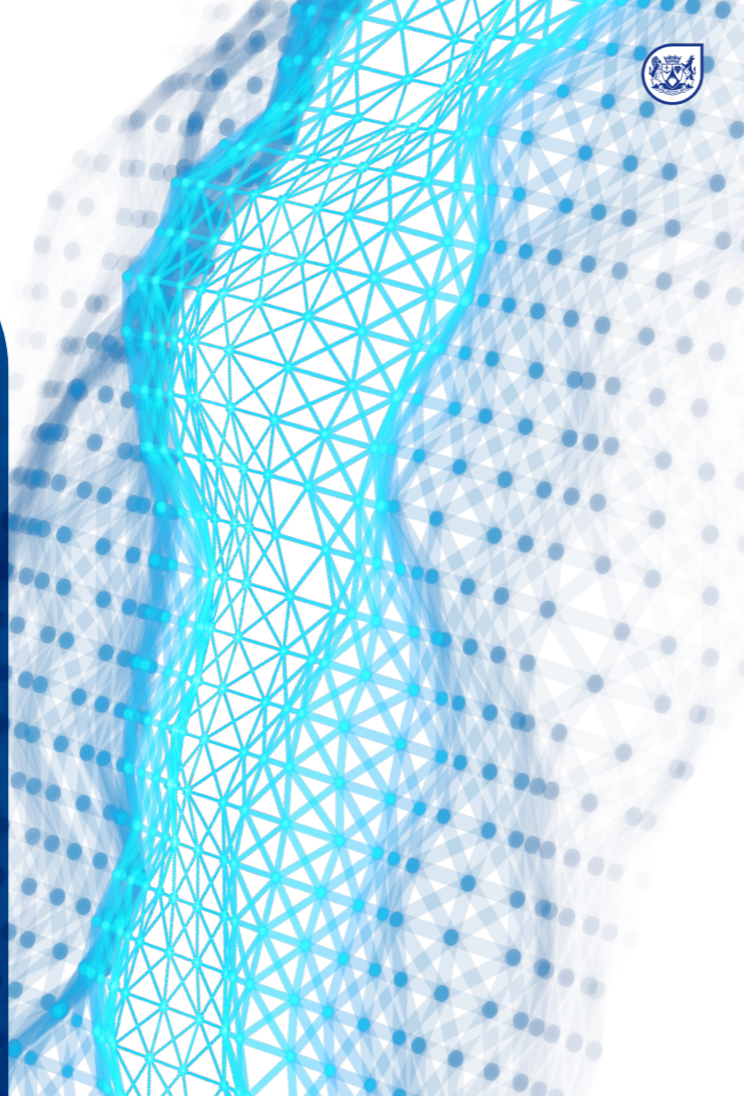
Western Cape Infrastructure 2050 is more than a set of documents. It is a call to action: a shared commitment to co-create, co-invest, and co-deliver infrastructure that is measurable, visible, and meaningful; and that achieves our vision of enabling infrastructure-led, growth, and investment for the Western Cape that we believe will benefit, and must benefit, the communities we serve.

This is more than a plan. It is a commitment to uplift lives, connect communities, and build a future where every resident of the Western Cape can thrive.



**Minister
Tertuis Simmers**

Western Cape Provincial
Minister of Infrastructure



Department of Infrastructure
Head Office, 9 Dorp Street, Cape Town, 8001.
www.westerncape.gov.za/infrastructure



Western Cape
Government
FOR YOU