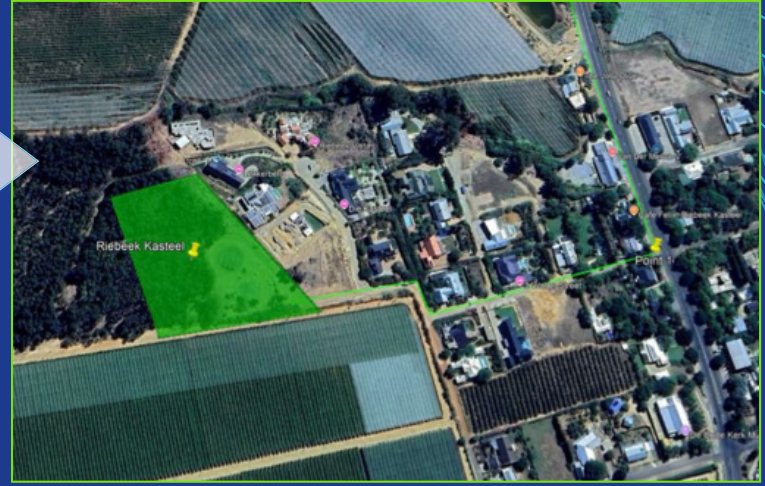


SWARTLAND BULK WATER SUPPLY: KASTEELBERG TO RIEBEEK KASTEEL & RIEBEEK KASTEEL NEW 4.5ML RESERVOIR



MAP OF THE PROJECT



PROJECT SUMMARY

The Riebeeck Kasteel New Reservoir and Pipelines Project involves the planning, design, and implementation of a 5 ML reinforced concrete reservoir and approximately 7.3 km of HDPE bulk pipelines to address increasing water demand, improve operational resilience, and support future development within the Swartland municipal supply area. The project replaces ageing infrastructure—including the existing 600 kL reservoir—and augments the current system serving Riebeeck Kasteel, ensuring adequate storage for peak demand, emergency supply, and long-term growth across development zones RK_01 to RK_13. The initiative includes geotechnical, environmental, and topographical investigations, conceptual and detailed engineering design, procurement, and full construction supervision through to close-out, contributing to improved network efficiency and alignment with the Swartland Water Master Plan

PROJECT STATUS



The project is currently at the end of the Inception Stage, with the Inception Report submitted on 17 October 2025 and approved on 7 November 2025 following confirmation of the project brief, site selection, preliminary capacity assessment, and scope definition. All specialist investigations (geotechnical, topographical, and environmental screening) have been procured and are underway, scheduled for completion by 30 June 2026, after which the project will advance to the Concept and Viability (Preliminary Design) Stage beginning in July 2026. The municipality has confirmed the preferred reservoir location (Option 2), appointed Mariswe for the full project scope, and provided initial budget allocations, positioning the project to proceed into design development once outstanding investigations are finalized.

The proposed site is located on the corner of Walter Street and Uitsig Close, Riebeeck Kasteel, coordinates 33 23' 1.84" S (latitude) and 18 53' 15.91" E (longitude)

FINANCIAL NEEDS



Approximate value: R90,7 million.

This includes R78,235,659.70 for bulk infrastructure construction, R9,519,493.03 for professional fees and specialist studies, R2,988,000.00 for full-time construction monitoring, and additional allowances for disbursements and contingencies, resulting in a construction total of R89,971,008.66 including VAT before contingency uplift. The financial need is significantly higher than the municipality's short-term allocations of R500,000 for the 2025/26 financial year and R2.5 million for 2026/27, highlighting a major funding gap for design completion, procurement, and subsequent construction phases. Substantial external funding (through grants, MIG allocations, or phased municipal budgeting) will be required to progress from design into construction and ultimately deliver the full reservoir and pipeline upgrade.

PUBLIC/ PRIVATE SECTOR OPPORTUNITY



The project presents several opportunities for both public and private sector participation, particularly in bridging the substantial funding gap between the municipality's available budget and the estimated total project cost of R90.7 million. Public sector opportunities include securing grant-based funding such as MIG allocations, which the inception report identifies as a required additional service through preparation of an MIG technical report, as well as possible provincial and district-level support in areas such as environmental approvals, servitude registration, and alignment with regional bulk water planning. Private sector opportunities arise through procurement of specialist services (including geotechnical, survey, environmental and construction monitoring) as already initiated in the inception stage, along with major contracting work for the reservoir, pipelines, telemetry, and associated civil works.

The scale and duration of the project (running to 2030) also create space for private sector involvement in long-term construction, materials supply, and potential public-private collaboration models to accelerate implementation beyond the municipality's short-term financial capacity.

SWARTLAND BULK WATER SUPPLY: KASTEELBERG TO RIEBEEK KASTEEL & RIEBEEK KASTEEL NEW 4.5ML RESERVOIR

KEY PARTIES



- Swartland Municipality – Implementing Agent
- Civil Engineering Services Directorate – Swartland Municipality
- Municipal Infrastructure Grant (MIG) – Funding Partner
- Regulatory / Approval Bodies
- Professional Service Providers (PSPs)
- Contractors Appointed (Mariswe)
- West Coast District Municipality (WCDM) – Bulk Water Services Provider (Regional)
- Local Communities (Riebeek Kasteel)

TIMELINE

The project spans five years, from 20 March 2025 to 27 May 2030, progressing through inception, design, procurement, construction, and close-out.

2025 – INCEPTION & SPECIALIST STUDIES

20 MARCH 2025	Appointment of Mariswe	JUN – OCT 2025	Inception activities, site confirmation, capacity assessment, pipeline route analysis.
17 OCT 2025	Inception Report submitted	07 NOV 2025	Inception Report approved.
AUG – JUNE 2026	Specialist studies (geotechnical, topographical survey, environmental screening) completed.		

2026 – PRELIMINARY & DETAILED DESIGN

JAN – MAR 2026	Preliminary design (PDR) completed and approved.
----------------	--

2027 – INCEPTION & SPECIALIST STUDIES

MAR – JAN 2027	Detailed design, hydraulic modelling,	11 FEB 2027	Detailed Design Report submitted.
15 FEB 2027	Detailed Design Report approved.	MARCH 2027	Wayleaves received.
APRIL 2027	Compilation and approval of tender	MAY 2027	Tender documentation submitted.
JUN 2027	Tender advertising, evaluation, adjudication, and contractor appointment.	JULY 2027	Contractor appointed.
AUG 2027	Work permit application finalised and site handover.		

2027 – 2030 – CONSTRUCTION & CONTRACT ADMINISTRATION

AUG 2027 – 11 MAR 2030	Full construction period (reservoir, pipelines, civil works, telemetry).	Continuous construction monitoring throughout this period.
------------------------	--	--

2030 – TESTING, COMPLETION & CLOSE-OUT

MAR 2029 – MAR 2030	Servitude registration and acceptance	26 MAR – 27 MAY 2030	Close-out stage.
29 APR 2030	Close-out report submitted.	27 MAY 2030	Final approval and formal project completion.